



Hangmans Lane

Inspection Ref: 1720584

Site Ref: 18404

Operational Inspection - 25-July-2022 - 09:15 Inspector Terry Hill

Risk Assessment: 8 Low Risk



Location:

The site is located in an area of public open space and is not directly overlooked by any properties in the local community.

Disabled Access:

Generally accessible; an area accessible to most.



i 0 - Risk Assessment not Undertaken

Item: Boulders
Manufacturer: Natural Feature
Surface Type: Grass
Item Quantity: 1
Equipment Compliance: N/A
Surface Area Compliance: N/A



Total Findings: 1

Finding 1

This item is satisfactory - no work required -

i 8 - Low Risk

Item: Litter Bin
Manufacturer: Streetmaster
Surface Type: Grass
Item Part Number: Cardiff
Item Quantity: 1
Equipment Compliance: N/A
Surface Area Compliance: N/A
Total Findings: 1



Finding 1

Bin full - Emptying required

i 1 - Very Low Risk

Item: Sign
Manufacturer: Owner/Operator
Surface Type: N/A
Item Quantity: 1
Equipment Compliance: N/A
Surface Area Compliance: N/A



Total Findings: 1

Finding 1

Slight damage - Monitor

i 0 - Risk Assessment not Undertaken

Item: Gate - Self Closing
Manufacturer: Play & Leisure Ltd
Surface Type: Wet Pour
Item Quantity: 2
Equipment Compliance: N/A
Surface Area Compliance: N/A



Total Findings: 1

Finding 1

This item is satisfactory - no work required -

i 0 - Risk Assessment not Undertaken

Item: Gate - Pedestrian
Manufacturer: A & E Group Ltd
Surface Type: Wet Pour
Item Quantity: 1
Equipment Compliance: N/A
Surface Area Compliance: N/A



Total Findings: 1

Finding 1

Item satisfactory - No work required

i 0 - Risk Assessment not Undertaken

Item: Hopscotch
Manufacturer: Play & Leisure Ltd
Surface Type: Wet Pour
Item Quantity: 1
Equipment Compliance: N/A
Surface Area Compliance: N/A



Total Findings: 1

Finding 1

This item is satisfactory - no work required -

i 1 - Very Low Risk

Item: Interactive Play
Manufacturer: Play & Leisure Ltd
Surface Type: Wet Pour
Item Quantity: 1
Equipment Compliance: No
Surface Area Compliance: Yes



Total Findings: 3

Finding 1

Paint chipped - Monitor

Finding 2

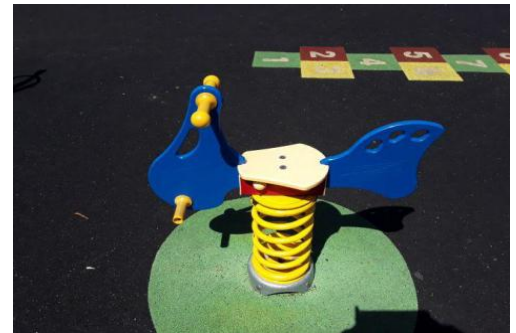
Both End fittings missing - Replacement required

Finding 3

Unsure if bolt missing ? - Research required

i 1 - Very Low Risk

Item: Misc Springer
Manufacturer: Fahr Industries
Surface Type: Wet Pour
Item Quantity: 1
Equipment Compliance: No
Surface Area Compliance: Yes



Total Findings: 1

Finding 1

Stopper missing - New stopper required

i 3 - Very Low Risk

Item: Spring Cow
Manufacturer: Fahr Industries
Surface Type: Wet Pour
Item Quantity: 1
Equipment Compliance: Yes
Surface Area Compliance: Yes



Total Findings: 1

Finding 1

Cup broken - New cup required

i 6 - Low Risk

Item: 2 Bay (2 Flat, 2 Cradle)
Manufacturer: Play & Leisure Ltd
Surface Type: Wet Pour
Item Quantity: 1
Equipment Compliance: No
Surface Area Compliance: Yes



Total Findings: 5

Finding 1

Swing seats low ,mimumum 400 mm - Repair required

Finding 3

Service, oil,grease required - Service required

Finding 5

Crotch strap split - Repair required

Finding 2

Metal exposed on cradle seat - Monitor

Finding 4

Bracket rusting - Monitor

i 5 - Very Low Risk

Item: Basket Swing - Type 1
Manufacturer: Play & Leisure Ltd
Surface Type: Wet Pour
Item Quantity: 1
Equipment Compliance: No
Surface Area Compliance: Yes



Total Findings: 3

Finding 1

Seat low, minimum 400 mm - Repair required

Finding 2

Service required - Oil/grease required

Finding 3

Dog bites - Monitor

i 8 - Low Risk

Item: Inclusive Roundabout
Manufacturer: Play & Leisure Ltd
Surface Type: Wet Pour
Item Quantity: 1
Equipment Compliance: No
Surface Area Compliance: Yes



Total Findings: 4

Finding 1

Gap at Edge of roundabout - Possible finger trap ?

Finding 2

Yellow safety surface crumbling - Monitor

Finding 3

Safety surface lowering at edge - Monitor

Finding 4

Excessive movement in bearings - Monitor



i 0 - Risk Assessment not Undertaken

Item: Fence - Bow Top
Manufacturer: Play & Leisure Ltd
Surface Type: Wet Pour
Item Quantity: 1
Equipment Compliance: N/A
Surface Area Compliance: N/A



Total Findings: 1

Finding 1

This item is satisfactory - no work required -

i 0 - Risk Assessment not Undertaken

Item: Bench
Manufacturer: Play & Leisure Ltd
Surface Type: Wet Pour
Item Quantity: 2
Equipment Compliance: N/A
Surface Area Compliance: N/A



Total Findings: 1

Finding 1

This item is satisfactory - no work required -

i 0 - Risk Assessment not Undertaken

Item: Free Standing Slide
Manufacturer: Play & Leisure Ltd
Surface Type: Wet Pour
Item Quantity: 1
Equipment Compliance: No
Surface Area Compliance: Yes



Total Findings: 1

Finding 1

This item is satisfactory - no work required -

i 0 - Risk Assessment not Undertaken

Item: See Saw
Manufacturer: Play & Leisure Ltd
Surface Type: Wet Pour
Item Quantity: 1
Equipment Compliance: Yes
Surface Area Compliance: Yes



Total Findings: 1

Finding 1

Paint chipped - Monitor

i 0 - Risk Assessment not Undertaken

Item: Multi Play (Junior)
Manufacturer: Play & Leisure Ltd
Surface Type: Wet Pour
Item Quantity: 1
Equipment Compliance: No
Surface Area Compliance: Yes



Total Findings: 1

Finding 1

Safety surface shrinking - Monitor

i 0 - Risk Assessment not Undertaken

Item: Bench
Manufacturer: Unknown
Surface Type: Wet Pour
Item Quantity: 1
Equipment Compliance: N/A
Surface Area Compliance: N/A



Total Findings: 1

Finding 1

Item satisfactory - No work required



i 0 - Risk Assessment not Undertaken

Item: Shelter
Manufacturer: Play & Leisure Ltd
Surface Type: Grass
Item Quantity: 1
Equipment Compliance: N/A
Surface Area Compliance: N/A



Total Findings: 1

Finding 1

This item is satisfactory - no work required -

i 0 - Risk Assessment not Undertaken

Item: Site General
Manufacturer: Owner/Operator
Surface Type: N/A
Item Quantity: 1
Equipment Compliance: N/A
Surface Area Compliance: N/A



Total Findings: 1

Finding 1

Safety surface shrinking - Monitor

Findings information

8 - Low Risk (Finding 1)

Item: Ancillary Items - Litter Bin
Manufacturer: Streetmaster

Risk Level: L - Low Risk
Surface: Grass



Finding: Bin full

Action: Emptying required

1 - Very Low Risk (Finding 1)

Item: Ancillary Items - Sign
Manufacturer: Owner/Operator

Risk Level: V - Very Low Risk
Surface: N/A



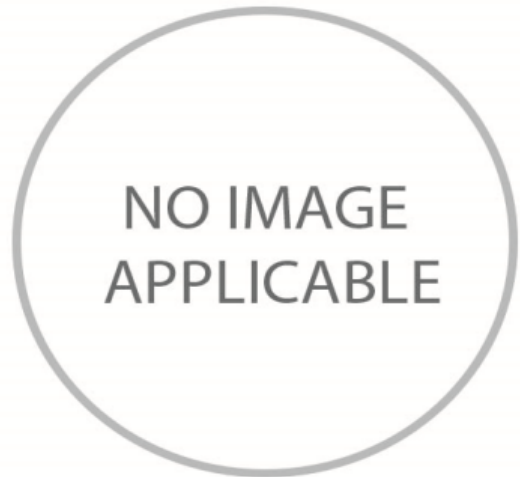
Finding: Slight damage

Action: Monitor

i 0 - Risk Assessment not Undertaken (Finding 1)

Item: Gates - Gate - Pedestrian
Manufacturer: A & E Group Ltd

Risk Level: N - Risk Assessment not Undertaken
Surface: Wet Pour



Finding: Item satisfactory

Action: No work required

i 0 - Risk Assessment not Undertaken (Finding 1)

Item: Other - Interactive Play
Manufacturer: Play & Leisure Ltd

Risk Level: N - Risk Assessment not Undertaken
Surface: Wet Pour



Finding: Paint chipped

Action: Monitor

i 1 - Very Low Risk (Finding 2)

Item: Other - Interactive Play
Manufacturer: Play & Leisure Ltd

Risk Level: V - Very Low Risk
Surface: Wet Pour



Finding: Both End fittings missing

Action: Replacement required

i 1 - Very Low Risk (Finding 3)

Item: Other - Interactive Play
Manufacturer: Play & Leisure Ltd

Risk Level: V - Very Low Risk
Surface: Wet Pour



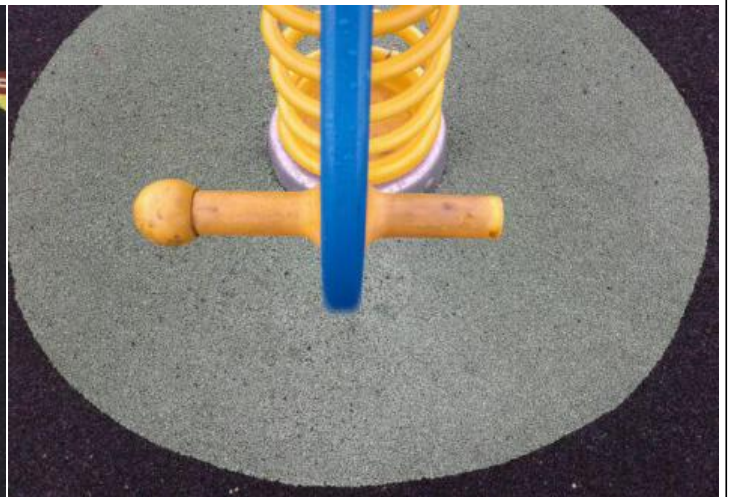
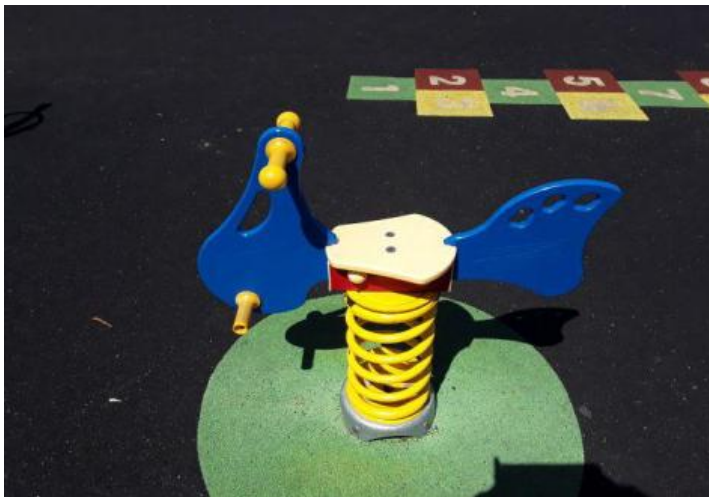
Finding: Unsure if bolt missing ?

Action: Research required

i 1 - Very Low Risk (Finding 1)

Item: Rocking Equipment - Misc Springer
Manufacturer: Fahr Industries

Risk Level: V - Very Low Risk
Surface: Wet Pour



Finding: Stopper missing

Action: New stopper required

i 3 - Very Low Risk (Finding 1)

Item: Rocking Equipment - Spring Cow
Manufacturer: Fahr Industries

Risk Level: V - Very Low Risk
Surface: Wet Pour



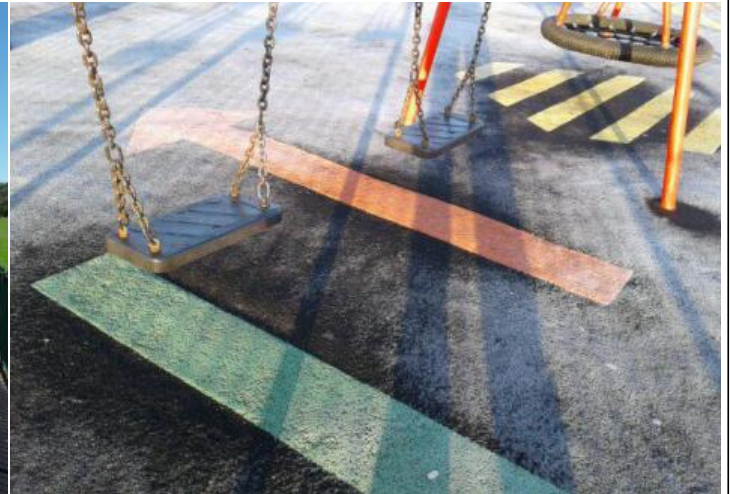
Finding: Cup broken

Action: New cup required

i 5 - Very Low Risk (Finding 1)

Item: Swings - 2 Bay (2 Flat, 2 Cradle)
Manufacturer: Play & Leisure Ltd

Risk Level: V - Very Low Risk
Surface: Wet Pour



Finding: Swing seats low ,mimumum 400 mm

Action: Repair required

i 1 - Very Low Risk (Finding 2)

Item: Swings - 2 Bay (2 Flat, 2 Cradle)
Manufacturer: Play & Leisure Ltd

Risk Level: V - Very Low Risk
Surface: Wet Pour



Finding: Metal exposed on cradle seat

Action: Monitor

i 0 - Risk Assessment not Undertaken (Finding 3)

Item: Swings - 2 Bay (2 Flat, 2 Cradle)
Manufacturer: Play & Leisure Ltd

Risk Level: N - Risk Assessment not Undertaken
Surface: Wet Pour



Finding: Service, oil,grease required

Action: Service required

i 0 - Risk Assessment not Undertaken (Finding 4)

Item: Swings - 2 Bay (2 Flat, 2 Cradle)
Manufacturer: Play & Leisure Ltd

Risk Level: N - Risk Assessment not Undertaken
Surface: Wet Pour



Finding: Bracket rusting

Action: Monitor

i 6 - Low Risk (Finding 5)

Item: Swings - 2 Bay (2 Flat, 2 Cradle)
Manufacturer: Play & Leisure Ltd

Risk Level: L - Low Risk
Surface: Wet Pour



Finding: Crotch strap split

Action: Repair required

i 5 - Very Low Risk (Finding 1)

Item: Swings - Basket Swing - Type 1
Manufacturer: Play & Leisure Ltd

Risk Level: V - Very Low Risk
Surface: Wet Pour



Finding: Seat low, minimum 400 mm

Action: Repair required

i 0 - Risk Assessment not Undertaken (Finding 2)

Item: Swings - Basket Swing - Type 1
Manufacturer: Play & Leisure Ltd

Risk Level: N - Risk Assessment not Undertaken
Surface: Wet Pour



Finding: Service required

Action: Oil/grease required

i 3 - Very Low Risk (Finding 3)

Item: Swings - Basket Swing - Type 1
Manufacturer: Play & Leisure Ltd

Risk Level: V - Very Low Risk
Surface: Wet Pour



Finding: Dog bites

Action: Monitor

i 1 - Very Low Risk (Finding 1)

Item: Rotor Play - Inclusive Roundabout
Manufacturer: Play & Leisure Ltd

Risk Level: V - Very Low Risk
Surface: Wet Pour



Finding: Gap at Edge of roundabout

Action: Possible finger trap ?

i 0 - Risk Assessment not Undertaken (Finding 2)

Item: Rotor Play - Inclusive Roundabout
Manufacturer: Play & Leisure Ltd

Risk Level: N - Risk Assessment not Undertaken
Surface: Wet Pour



Finding: Yellow safety surface crumbling

Action: Monitor

i 8 - Low Risk (Finding 3)

Item: Rotor Play - Inclusive Roundabout
Manufacturer: Play & Leisure Ltd

Risk Level: L - Low Risk
Surface: Wet Pour



Finding: Safety surface lowering at edge

Action: Monitor

i 3 - Very Low Risk (Finding 4)

Item: Rotor Play - Inclusive Roundabout
Manufacturer: Play & Leisure Ltd

Risk Level: V - Very Low Risk
Surface: Wet Pour



Finding: Excessive movement in bearings

Action: Monitor

i 0 - Risk Assessment not Undertaken (Finding 1)

Item: Rocking Equipment - See Saw
Manufacturer: Play & Leisure Ltd

Risk Level: N - Risk Assessment not Undertaken
Surface: Wet Pour



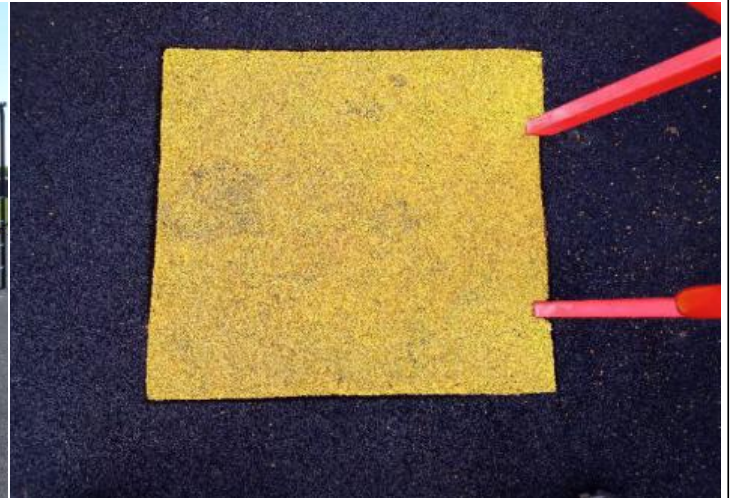
Finding: Paint chipped

Action: Monitor

i 0 - Risk Assessment not Undertaken (Finding 1)

Item: Activity Equipment - Multi Play (Junior)
Manufacturer: Play & Leisure Ltd

Risk Level: N - Risk Assessment not Undertaken
Surface: Wet Pour



Finding: Safety surface shrinking

Action: Monitor

i 0 - Risk Assessment not Undertaken (Finding 1)

Item: Ancillary Items - Bench
Manufacturer: Unknown

Risk Level: N - Risk Assessment not Undertaken
Surface: Wet Pour



Finding: Item satisfactory

Action: No work required



i 0 - Risk Assessment not Undertaken (Finding 1)

Item: Ancillary Items - Site General
Manufacturer: Owner/Operator

Risk Level: N - Risk Assessment not Undertaken
Surface: N/A



Finding: Safety surface shrinking

Action: Monitor